

# ETCHING CARTRIDGE

PET  
SERIES

All stainless steel filtration filter using precision etching processing

● **Advanced etching technology**

Using photo etching technology used in the field of electronic parts manufacturing for semiconductors etc, accurate hole is uniformly opened, so filtration accuracy is maintained.

● **The risk of contamination is drastically reduced**

There is no breakage of the steel wire due to breakage as compared to the wire mesh strainer, and there are few residues due to clogging.

● **Excellent Regenerative cleaning**

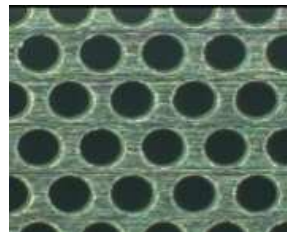
Because the structure is simple, it is excellent in regeneration cleaning and sanitary properties. It is economical because it can be washed and reused.

● **Chemical resistance**

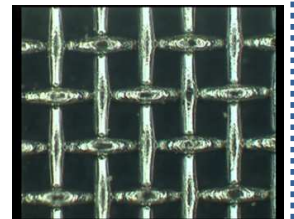
Alkaline and acid type chemicals are available.



Cylindrical cartridge



Etching



Wire mesh

**Filter composition**

Media: SUS316L End Plate: SCS14

**Filtration accuracy (Equivalent to mesh)**

20#, 40#, 60#, 80#, 100#, 120#, 150#, 200#

**Filtration area**

Nominal Length (in)	10	20	30
Filtration area (m <sup>2</sup> )	0.04	0.09	0.13

**Model**

Please select a model within the frame

PET □ - □□ - □□□ - □  
A B C D

A	B	C	D
<b>Mounting structure</b> No mark : Flat gasket type W : 222O-ring type F : 226O-ring type	<b>Length (mm)</b> ( Excluding gaskets ) O1 : 241.5 O2 : 489 O3 : 733 ※W・F type : 736.5	<b>Grade</b> (Equivalent to mesh) 20# : 20mesh    100# : 100mesh 40# : 40mesh    120# : 120mesh 60# : 60mesh    150# : 150mesh 80# : 80mesh    200# : 200mesh	<b>Gasket Materials</b> N : NBR T : PTFE D : Silicon V : Fluororubber E : EPDM

## Mounting structure

H type (Flat gasket type)



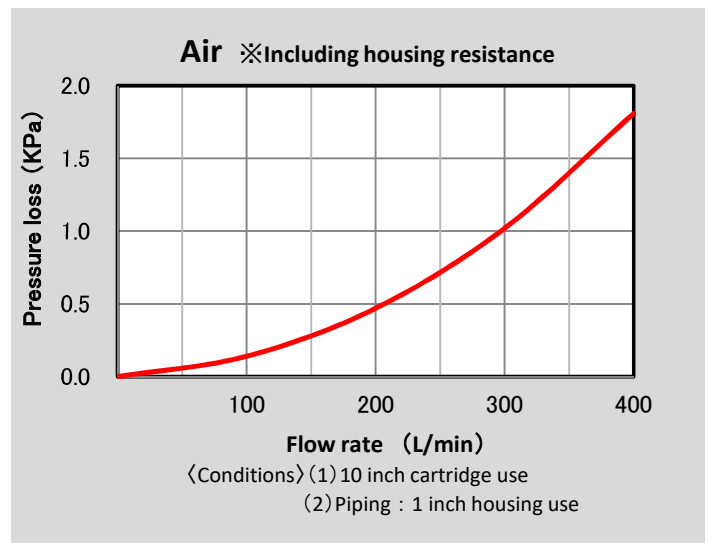
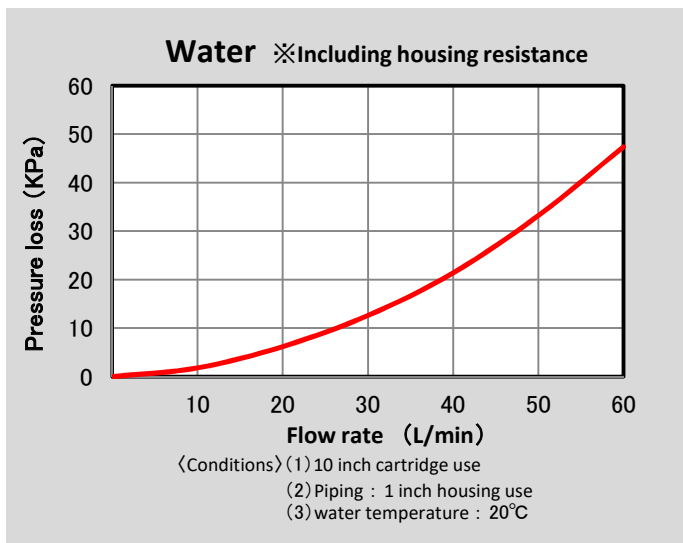
W type (222O-ring type)



F type (226O-ring type)



## Flow characteristic



## Method for cleaning and recycling cartridge

- **Backwashing**
  - Degrease the filter  
(Refer to solvent degreasing, alkaline degreasing, surface activated degreasing. )
  - With a soft brush, carefully brush the surface to remove dirt.
  - Blow compressed air from the inside of the cartridge. (Repeat above several times)
  - Degrease with a clean degreasing agent.
  - Use compressed air to blow water, wash thoroughly, dry and finish it.
- **Chemical cleaning**
  - If backwashing can not be completed, wash with mixed acid and treat with nitric acid.
  - Wash thoroughly with water, blow compressed air to remove moisture and dry.
- **Ultrasonic cleaning**
  - Perform ultrasonic cleaning in the cleaning solution.
  - Wash thoroughly and dry.

To achieve desirable cleaning result recommended combine all above cleaning method.

## MOSSFIL CO,LTD

2-5-3 Toyonotyo Kasukabe City Saitama Japan

TEL. 048(736)7655 FAX.048(736)6674

<http://www.mossfil.co.jp>

E-mail: [info@mossfil.co.jp](mailto:info@mossfil.co.jp)

