

METAL FIBER CARTRIDGE

【Sintered metal fiber nonwoven fabric】

JFP
SERIES

JFC
SERIES

It is an all stainless steel filter using sintered metal fiber nonwoven fabric.



● **Filtration efficiency, Filtration resistance**

Sintered metal fiber nonwoven fabric has a high filtering porosity of 65 to 80%, so it is a filter with low filtration resistance and high foreign matter collection ability.

● **Differential pressure resistance**

Because filter media is sintered, there is no sieve opening and filtration accuracy is maintained.

● **Pressure resistance**

Filter media is a three-layer structure and is suitable for liquid filtration with excellent pressure resistance and high viscosity.

● **Chemical resistance**

Alkaline and acid type chemicals are available.

● **Heat-resistance**

Heatproof temperature : (-190°C ~) +400°C

● **Reuse**

It is economical because it can be washed and reused

● **Compatibility**

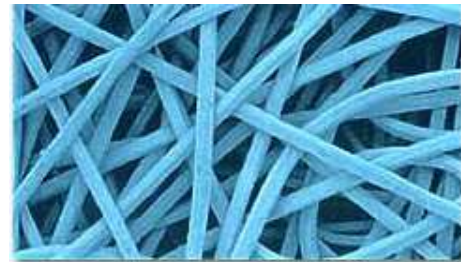
It is compatible with general products (OD ϕ 50 ~ ϕ 70 mm, Height 250, 500, 750 mm), and you can upgrade the filtration equipment.



Pleated type cartridge



Cylindrical cartridge



Metal Fiber
(Sintered metal fiber nonwoven fabric)

Filter composition

media: SUS316L plate: SCS14

Other: SUS316

Filtration accuracy (Nominal)

0.8, 1, 3, 5, 10, 15, 20, 25, 30, 40 μ

Filtration area (m²)

shape	Length (in)		
	10	20	30
Pleated type	0.10	0.20	0.30
Cylindrical type	0.04	0.09	0.13

Pressure resistance

cartridge outside \Rightarrow inside 0.86 MPa

cartridge inside \Rightarrow outside 0.07 Mpa

Model

Please select a model within the frame

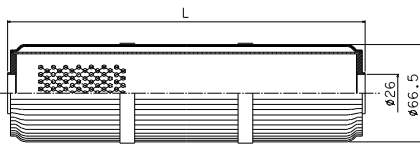
JF - - -

A B C D E

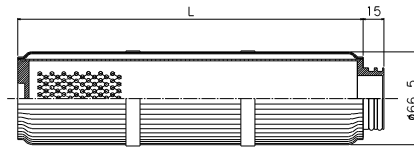
A	Filter material shape	B	Mounting structure	C	Length (including gaskets)	D	Filtration accuracy (Nominal)	E	Gasket
	P : Pleated type C : Cylindrical type		No mark: Flat gasket type W : 222O-ring type F : 226O-ring type		O1 : 247.5mm O2 : 495mm O3 : 739mm		O. 8 : 0.8 μ O15 : 15 μ O01 : 1 μ O20 : 20 μ O03 : 3 μ O25 : 25 μ O05 : 5 μ O30 : 30 μ O10 : 10 μ O40 : 40 μ		N : NBR T : PTFE D : Silicon V : Fluororubber E : EPDM

Mounting structure

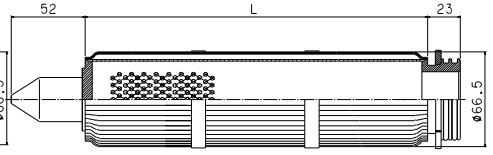
H type (Flat gasket type)



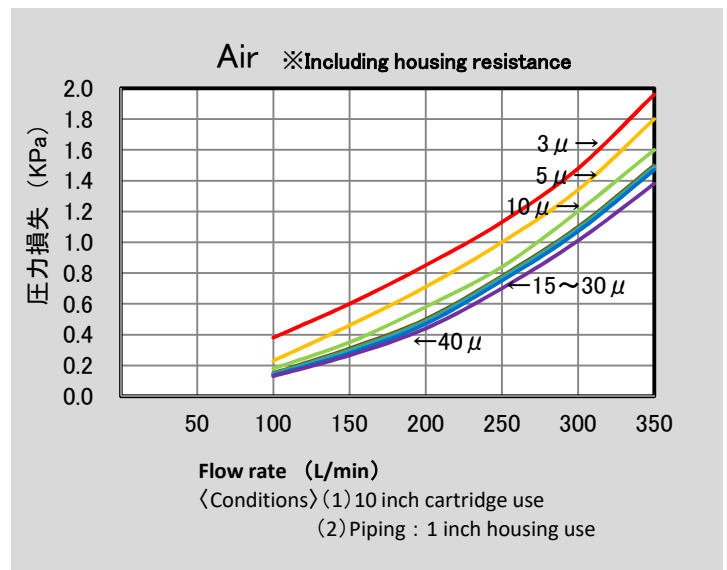
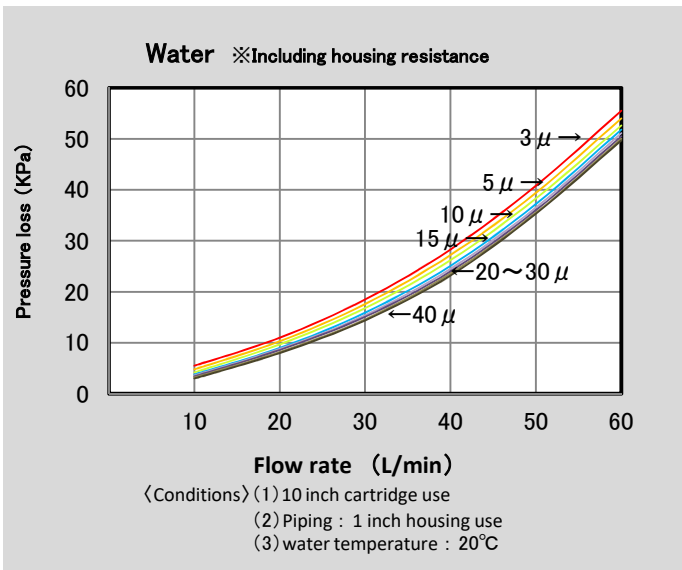
W type (222O-ring type)



F type (226O-ring type)



Flow characteristic



Method for cleaning and recycling cartridge

If clogging occurs and the pressure loss of the cartridge increases, please clean and regenerate in the following way.

● Backwashing

● Please first degrease

(There are methods such as solvent degreasing, alkaline degreasing, surface activated degreasing.)

● With a soft brush, carefully brush the surface to remove dirt.

● Blow compressed air from the inside of the cartridge. (Repeat above several times)

● Degrease with a clean degreasing agent.

● Use compressed air to blow water, wash thoroughly, dry and finish it.

● Chemical cleaning

● If backwashing can not be completed, wash with mixed acid and treat with nitric acid.

● Wash thoroughly with water, blow compressed air to remove moisture and dry.

● Ultrasonic cleaning

● Perform ultrasonic cleaning in the cleaning solution.

● Wash thoroughly and dry.

Depending on the type of dirt, if you combine each of the above cleaning methods, more effective cleaning can be expected.

MOSSFIL CO.,LTD

2-5-3 Toyonotyo Kasukabe City Saitama Japan

TEL. 048(736)7655 FAX.048(736)6674

<http://www.mossfil.co.jp>

E-msil:info@mossfil.co.jp