

# LAMINATE MESH CARTRIDGE

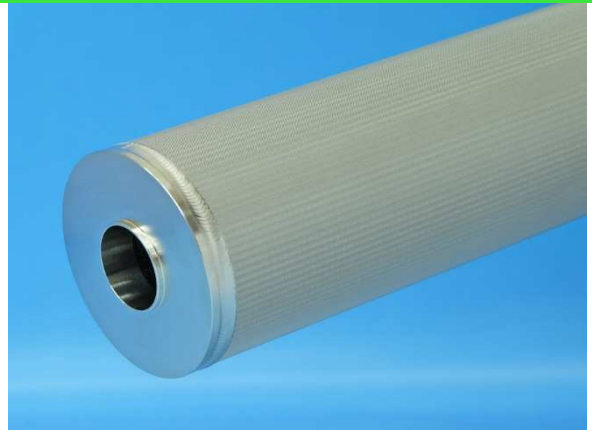
【5 layer sintered wire mesh cartridge】

SLC  
SERIES

All stainless steel filter using 5 layer sintered wire mesh.

● 5 layer sintered wire mesh

The laminate mesh is composed of five layers of wire gauze, the second layer of the main filtration layer wire gauze is sandwiched between the first layer of protected metal wire mesh and the third layer of dispersed metal wire gauze, and the mesh coarse strength high in the fourth layer and the fifth layer We lay the support layer wire gauze and sinter them into a unitary structure. The porosity is about 35%. Because the wires composing the wire mesh are fused to each other, peeling and opening are difficult to achieve even under high pressure.



● Chemical resistance

Alkaline and acid type chemicals are available.

● Heat-resistance

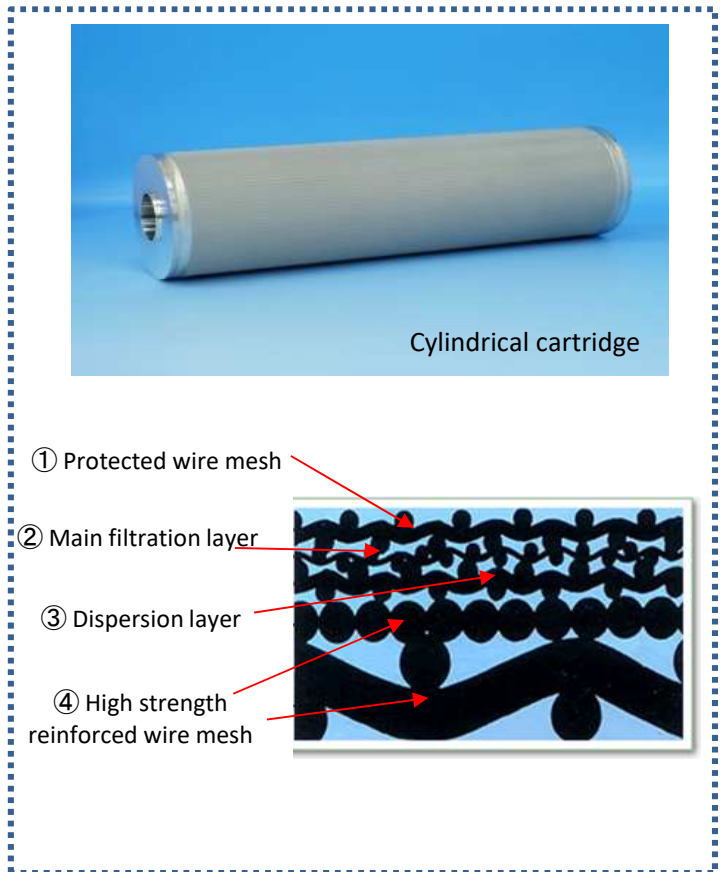
Heatproof temperature : (-190°C~)+400°C

● Reuse

It is economical because it can be washed and reused.

● Configuration

Compatible common products applicable (OD φ 50 ~ φ 70 mm, Height 250, 500, 750 mm), Can be upgraded to general filtration equipment.



Filter composition

Media: SUS316L End Plate: SCS14

Filtration accuracy (Nominal)

2, 5, 10, 20, 40, 75, 100, 150, 200 μ

Filtration area (m<sup>2</sup>)

Nominal Length (in)	10	20	30
Filtration area (m <sup>2</sup> )	0.05	0.1	0.15

Model

Please select a model within the frame

SLC    -      -        -   

A                      B                      C                      D

**A** Mounting structure

No mark: Flat gasket
W : 222O-ring type
F : 226O-ring type

**B** Length (mm)  
(Excluding gaskets)

01 : 241.5
02 : 489
03 : 733
※W・F type : 736.5

**C** Grade (μm, Nominal)

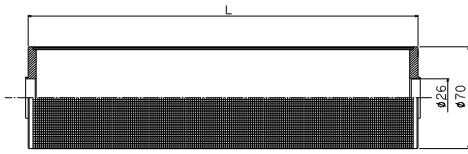
002 : 2	075 : 75
005 : 5	100 : 100
010 : 10	150 : 150
020 : 20	200 : 200
040 : 40	

**D** Gasket Materials

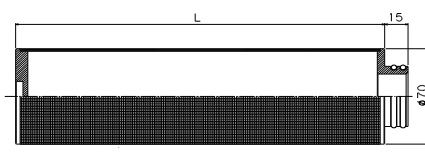
N : NBR
T : PTFE
D : Silicon
V : Fluororubber
E : EPDM

## Mounting structure

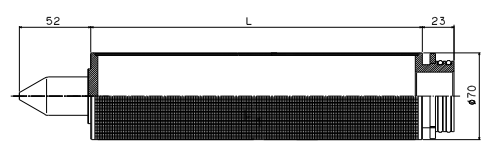
### H type (Flat gasket type)



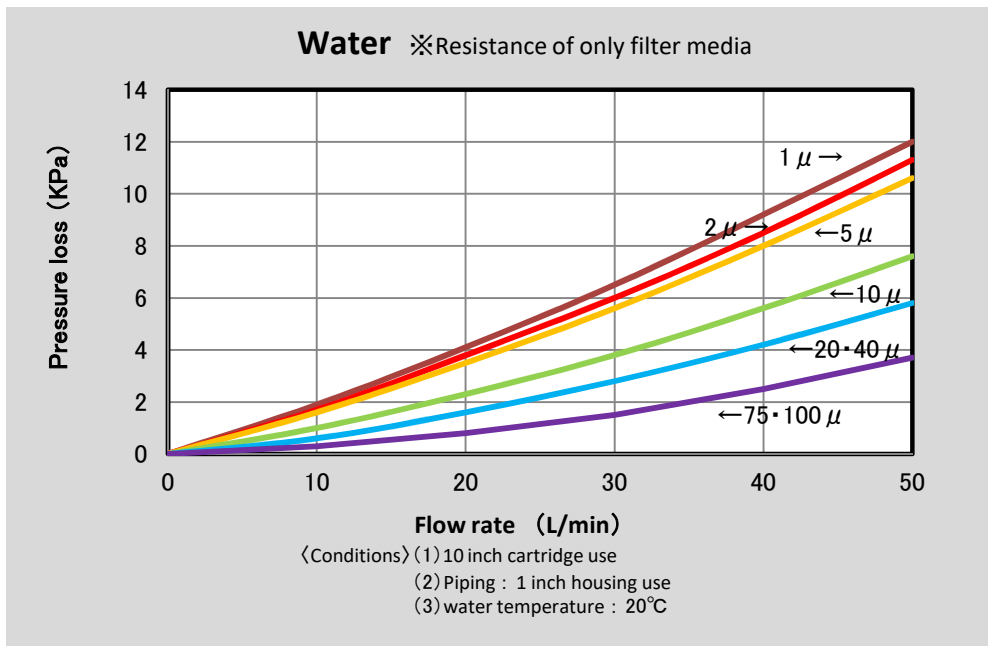
### W type (222O-ring type)



### F type (226O-ring type)



## Flow characteristic



## Method for cleaning and recycling cartridge

### Backwashing

- Degrease the filter  
(Refer to solvent degreasing, alkaline degreasing, surface activated degreasing.)
- With a soft brush, carefully brush the surface to remove dirt.
- Blow compressed air from the inside of the cartridge. (Repeat above several times)
- Degrease with a clean degreasing agent.
- Use compressed air to blow water, wash thoroughly, dry and finish it.

### Chemical cleaning

- If backwashing can not be completed, wash with mixed acid and treat with nitric acid.
- Wash thoroughly with water, blow compressed air to remove moisture and dry.

### Ultrasonic cleaning

- Perform ultrasonic cleaning in the cleaning solution.
- Wash thoroughly and dry.

To achieve desirable cleaning result recommended combine all above cleaning method.

## MOSSFIL CO,LTD

2-5-3 Toyonotyo Kasukabe City Saitama Japan

TEL. 048(736)7655 FAX.048(736)6674

<http://www.mossfil.co.jp>

E-mail: info@mossfil.co.jp

